

# House & Land Package

Lumina  
by ARDEN

ARDEN  
HOMES



## VERONA 34

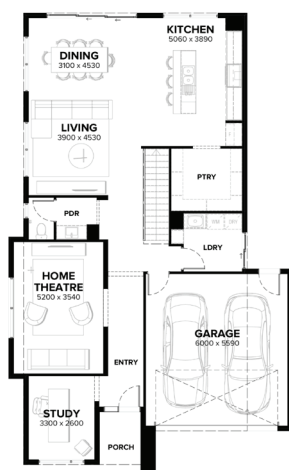
4 bedrooms 2 bathrooms 2 car spaces

LOT 5003 (315 m2)

MCNAUGHTON CRESCENT, ALIRA, BERWICK

FIXED PRICE

**\$1,127,427\***



- Fixed site costs, connections
- Payment on completion available
- All-electric home & 100% carbon neutral
- Reverse-cycle heating and cooling
- Rendered Hebel home
- COLORBOND® steel roof and panel lift garage door with remote
- 5KW Solar PV system
- Double glazing to windows
- LED downlights
- Floor coverings throughout 2590mm high ceilings to ground floor 20mm
- Caesarstone benchtops to Kitchen

## CONTACT

[ardenhomes.com.au](https://ardenhomes.com.au)

ALIRA

Price current at time of listing. Pricing based on Developer supplied engineering plans and plan of subdivision at the time and Arden Homes standard floor plan with pre-determined façade and preferred siting (alterations may incur additional charges). Package price does not include landscaping, furnishings, stamp duty, government, council, legal or bank charges. Images for illustrative purposes only and may depict upgrade options available at additional charges. Arden Homes reserves the right to withdraw or amend pricing, inclusions and promotion without notice. ^Commencement of building within 12 weeks refers to your site start date and is dependent on you hitting required milestones within your build journey. Arden is not responsible for delays due to third parties, your availability for required appointments or if changes at your request result in delays. Whilst every endeavour has been made to ensure the accuracy of the information provided, Arden does not provide any guarantees regarding the accuracy of its contents. Refer to your quote or contract documentation for specific details and inclusions or speak to your New Home Consultant for more information. (CDB-U 48276) ©2023 Arden Homes.